



Product Datasheet

Sales Enquires: sales@absoluteantibody.com
Support Queries: support@absoluteantibody.com
Tel: +44 (0)1642 688810
Fax: +44 (0)1642 688815
absoluteantibody.com

Recombinant Cat IgE Fc (His tagged)

Cat No: Pr00343-38.5

Product Summary

Description: Recombinant Cat immunoglobulin E heavy chain constant region (IgE Fc) (His tagged), manufactured using [AbAb's Recombinant Platform](#)

Protein: Cat IgE Fc domain (His tagged)

Structure / Form: Disulfide-linked homodimer

Species: Cat

Construct Design Note(s): Cat IgE Fc domain (His tagged)

Host: HEK293

Alternative Description: immunoglobulin epsilon heavy chain constant region; immunoglobulin E fragment crystallizable region; IgE-Fc; feline IgE Fc

Application(s): Recommended as: a control for Cat chimeric IgE Fc-fusion protein activity assay; an immunogen to generate antibodies against the Cat IgE-Fc domain or other Cat IgE-Fc domain applications.

Product Form

Purification: Purified by affinity chromatography.

Supplied in: PBS

Endotoxin: 0.251 EU/mg as determined by LAL chromogenic endotoxin assay

Shipping: The product is shipped on blue ice. Upon receipt, store it immediately at the temperature recommended.

Storage Recommendation: Recommended storage at 4°C for up to 1 month. For longer term storage store at -20°C or -80°C in appropriate sized aliquots.

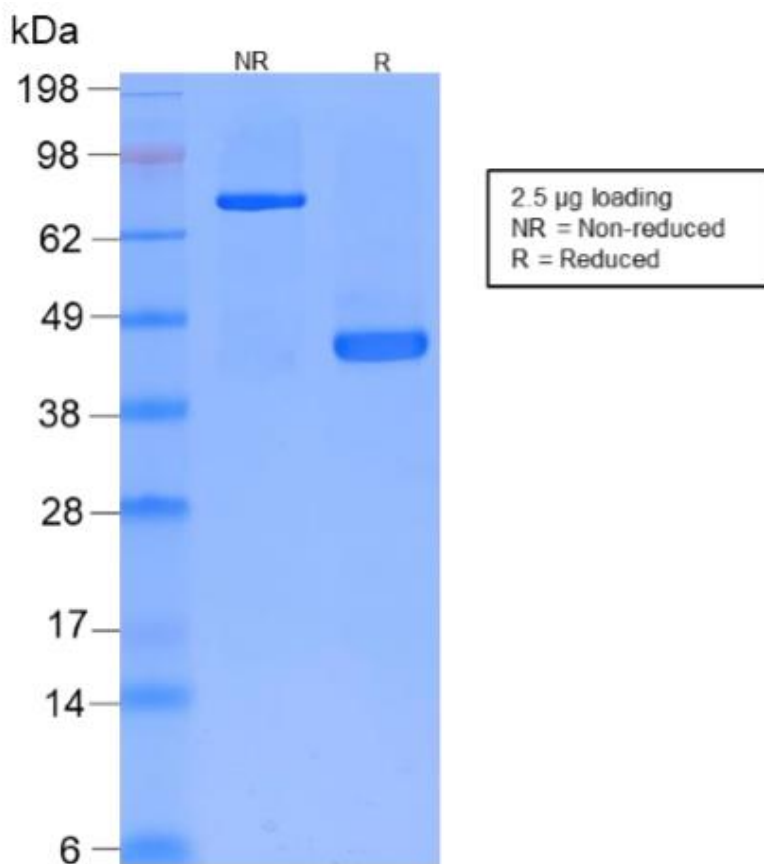
Important note - This product is for research use only. It is not intended for use in therapeutic or diagnostic procedures for humans or animals

IgE Fc sequence (monomer)

ACTMNFIPPTVKLFHSSCNPLGDTGSTIQLLCLISGYVPGDMEVTWLVDGQKATNIFPYTAPGKQEGKVTST
HSELNITQGEWVSQKTYTCQVTYQGFTFEDHARKCTESDPRGVSTYLSPPSPLDLYVHKSPKITCLVVDLA
NTDGMILTWSRENGESVHPDPMVKKTQYNGTITVTSTLPVDATDWVEGETYQCKVTHPDLPKDIVRSIAKA
PGRFRPPEVYVFLPPEGEPKTKDKVTLTCLIQNFFPPDISVQWLHNDSPVRTEQQATTWPHKATGPSPAFF
VFSRLEVSRADWEQRDVFTCQVVHEALPGFRTLKKS SVSKNPGHHHHHH

Calculated Molecular weight (dimer): 74517.86 Da

Extinction coefficient: 105170 M⁻¹ cm⁻¹ (calculation performed as in Pace et al, 1995)



SDS PAGE Analysis: From the left: Lane 1 : Molecular Mass Markers. Lane 2: 2.5µg Recombinant at IgE Fc domain resolved by SDS-PAGE under non-reducing (NR) conditions. Lane 3: 2.5µg Recombinant Cat IgE Fc domain resolved by SDS-PAGE under reducing conditions.

Important note - This product is for research use only. It is not intended for use in therapeutic or diagnostic procedures for humans or animals