



Sales Enquires: [sales@absoluteantibody.com](mailto:sales@absoluteantibody.com)  
Support Queries: [support@absoluteantibody.com](mailto:support@absoluteantibody.com)  
Tel: +44 (0)1642 688810  
Fax: +44 (0)1642 688815  
[absoluteantibody.com](http://absoluteantibody.com)

Recombinant Dog IgE Fc (His tagged)

Cat No: Pr00344-39.5

## Product Summary

**Description:** Recombinant dog immunoglobulin E heavy chain constant region (IgE Fc) (His tagged), manufactured using [AbAb's Recombinant Platform](#)

**Protein:** Dog IgE Fc domain (His tagged)

**Structure / Form:** Disulfide-linked homodimer

**Species:** Dog

**Construct Design Note(s):** Dog IgE Fc domain (His tagged)

**Host:** HEK293

**Alternative Description:** immunoglobulin epsilon heavy chain constant region; immunoglobulin E fragment crystallizable region; IgE-Fc; canine IgE Fc

**Application(s):** Recommended as: a control for Dog chimeric IgE Fc-fusion protein activity assay; an immunogen to generate antibodies against the Dog IgE-Fc domain or other Dog IgE-Fc domain applications.

## Product Form

**Purification:** Purified by affinity chromatography.

**Supplied in:** PBS

**Endotoxin:** 0.251 EU/mg as determined by LAL chromogenic endotoxin assay

**Shipping:** The product is shipped on blue ice. Upon receipt, store it immediately at the temperature recommended.

**Storage Recommendation:** Recommended storage at 4°C for up to 1 month. For longer term storage store at -20°C or -80°C in appropriate sized aliquots.

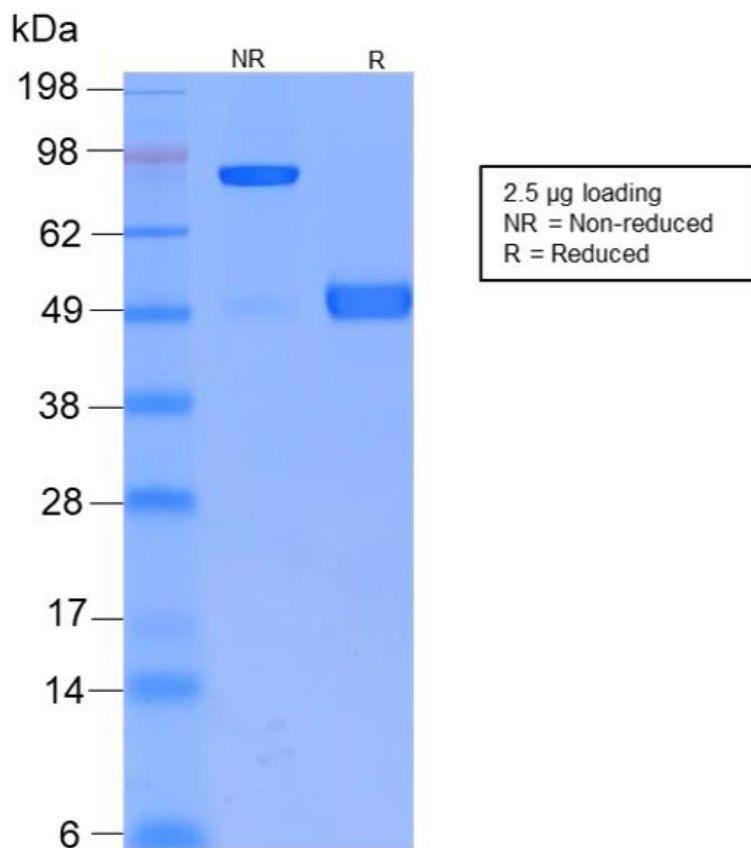
**Important note - This product is for research use only. It is not intended for use in therapeutic or diagnostic procedures for humans or animals**

**IgE Fc Sequence (monomer):**

ACALNFIPPTVKLFHSSCNPVGDTHHTTIQLLCLISGYVPGDMEVIWLVDGQKATNIFPYTAPGTKEGNVTSTH  
SELNITQGEWVSQKTYTCQVTYQGFTFKDEARKCSESDPRGVTSYLSPPSPLDLYVHKAPKITCLVVDLAT  
MEGMNLTWYRESKEPVNPGPLNKKDHFNGTITVTSTLPVNTNDWIEGETYYCRVTHPHLPKDIVRSIAKAP  
GKRAPPDVYLFLLPPEEEQGTKDRVTLTCLIQNFFPADISVQWLRNDSPIQTDQYTTTGPHKVSRSRPAFFIF  
SRLEVSRVDWEQKNKFTCQVVHEALSGSRILQKWVSKTPGHHHHHH

**Calculated Molecular weight (dimer):** 74898.44 Da

**Extinction coefficient:** 111130 M<sup>-1</sup> cm<sup>-1</sup> (calculation performed as in Pace et al, 1995).



**SDS PAGE Analysis:** From the left: Lane 1 : Molecular Mass Markers. Lane NR: 2.5µg Recombinant Dog IgE Fc domain resolved by SDS-PAGE under non-reducing (NR) conditions. Lane R: 2.5µg Recombinant Dog IgE Fc domain resolved by SDS-PAGE under reducing conditions.

**Important note - This product is for research use only. It is not intended for use in therapeutic or diagnostic procedures for humans or animals**