



Product Datasheet

Sales Enquires: sales@absoluteantibody.com
Support Queries: support@absoluteantibody.com
Tel: +44 (0) 1642 688810
Fax: +44 (0) 1642 688815
absoluteantibody.com

Recombinant Human ACE2-IgG Fc (LALA)-Fusion Protein

Cat No: Pr00439

Product Summary

Description: Recombinant Human ACE2-IgG Fc (LALA)-Fusion Protein manufactured using [AbAb's Recombinant Platform](#)

Protein: Human Angiotensin-converting enzyme 2 (ACE2)

Fc domain: Human IgG1 containing silencing LALA mutations

Species: Human

UniProt Accession Number: Q9BYF1

Alternative Description: ACE2 -Fc chimera; ACE2 (Fc tag); ACEH; Metalloprotease MPROT15

Activity: ACE2 acts as a receptor for human coronaviruses SARS-CoV and SARS-CoV-2, as well as human coronavirus NL63/HCoV-NL63.

Product Form

Purification: Purified by affinity chromatography.

Supplied in: PBS

Storage Recommendation: Recommended storage at 4°C for up to 1 month. For longer term storage store at -20°C or -80°C in appropriate sized aliquots.

Lot no: T2015B01

Concentration: 1 mg/ml

Quantity: 100 mg

Molecular weight: 190585.2 Da

Extinction coefficient: 376360 M⁻¹ cm⁻¹ (calculation performed as in Pace et al, 1995).

Important note - This product is for research use only. It is not intended for use in therapeutic or diagnostic procedures for humans or animals

Endotoxin: <0.050 EU/mg as determined by LAL chromogenic endotoxin assay:



Detailed Endotoxin Cartridge Report: CRL-19461096-320200421-001

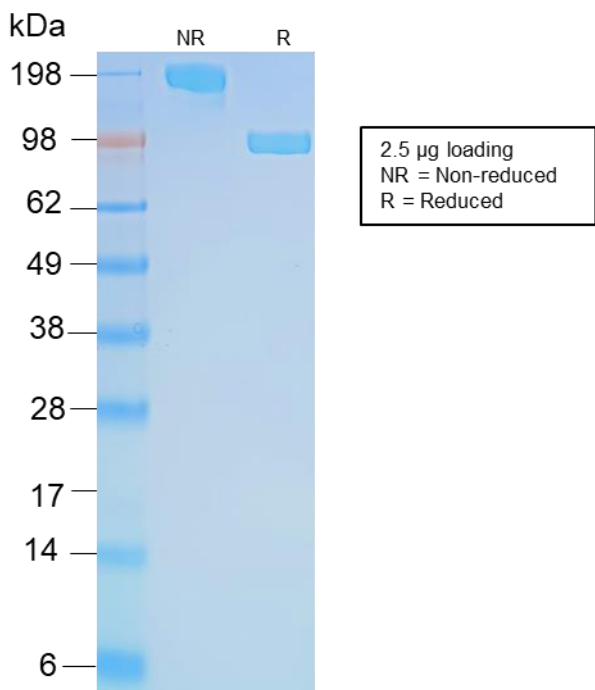
ASSAY INFORMATION:

Assay Name: CRL-19461096-320200421-001	
Analyst: AbAb_user	Assay Date/Time: 21/04/2020 14:31:44 UTC+01:00
Lab Name: N/A	
Instrument Type: nexgen PTS/MCS	Instrument Serial Number: 19461123

SAMPLE RESULTS:

Serial Number/Bay: MCS 19461096/3		Start/End Temp (°C): 37.0:37.0						
Sample Name: Pr00439								
Sample ID: N/A		Sample Lot: T2015B01	Dil./Conc.: 1.00 mg/mL					
Sample Comments: N/A								
Cartridge Lot Number: 6513164		Cartridge Range: 5-0.05 EU/mL						
Calibration Code: 513836555171		Archived Spike Concentration: 0.71 EU/mL						
Range: 138-765 seconds		Y-Intercept: +2.400	Slope: -0.372					
Endotoxin Value: <0.050 EU/mg		Sample CV Limit: <25%	Status: VALID					
Endotoxin Limit: <1 EU/mg	Status: VALID	Spike CV Limit: <25%	Status: VALID					
Alert Limit: N/A		Spike Recovery Range: 50-200%	Status: VALID					
SAMPLE DATA				SPIKE DATA				
Channel	Reaction Time	CV%	Sample Value	Channel	Reaction Time	CV%	Spike Value	Spike Recovery %
1	>765	0.0 %	<0.050 EU/mg	2	330	10.6 %	0.532 EU/mL	75 %
3	>765			4	284			

SDS PAGE gel image:



Pr00439 under non-reducing and reducing (DTT) conditions resolved by SDS-PAGE and stained using Coomassie-Blue.

Important note - This product is for research use only. It is not intended for use in therapeutic or diagnostic procedures for humans or animals

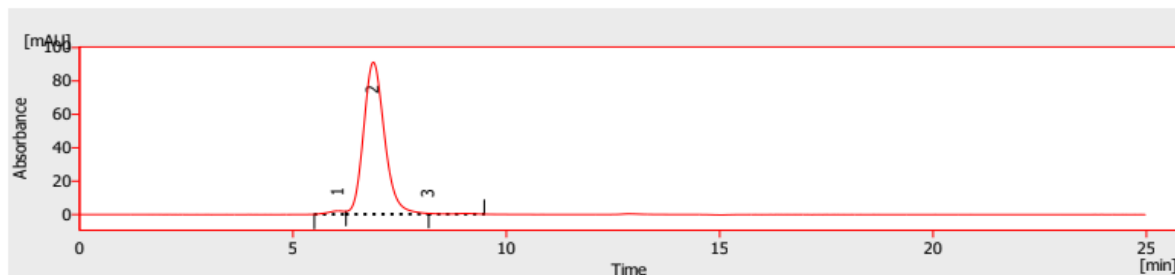
Full protein sequence:

QSTIEEQAKTFLDKFNHEAEDLFYQSSLASWNYNTNITEENVQNMNAGDKWSAFLKEQSTLAQMYPLQEIQNLTVKL
 QLQALQQNGSSVLSSEKSKRLNLTILNTMSTIYSTGKVCNPDNPQECLLLEPGLNEIMANSLDYNERLWAWESWRSEV
 GKQLRPLYEEYVVLKNEMARANHIEDYGDYWRGDYEVNGVDGYDYSRGQLIEDVEHTFEEIKPLYEHLHAYVRAKLM
 NAYPSYISPIGCLPAHLLGDMWGRFWTNLYSLTVPFGQKPNIDVTDAMVDQAWDAQRIFKEAEKFFVSVGLPNMTQG
 FWENSMLTDPGNVQKAVCHPTAWDLGKGDFRILMCTKVTMDDFLTAHHEMGHIQYDMAYAAQPFLLRNGANEGFHE
 AVGEIMSLSAATPKHLKSIGLLSPDFQEDNETEINFLLKQALTIVGTLPFTYMLEKWRWMVFKGEIPKDQWMKKWEM
 KREIVGVVEPVPHDETYCDPASLFHVSNDYSFIRYYTRTLYQFQFQEALCQAAKHEGPLHKCDISNSTEAGQKLFNML
 RLKSEPWTALENVVGAKNMNRPLLNYFEPLFTWLKDQNKNSFVGWSTDWSPYADGGGGSGGGGSDKHTHTCPP
 CPAPEAAGGPSVFLFPPKPKDTLMISRTPEVTCVVVDVSHEDPEVKFNWYVDGVEVHNAKTKPREEQYNSTYRVVSV
 LTVLHQDWLNGKEYKCKVSNKALPAPIEKTISKAKGQPREPQVYTLPPSRDELTKNQVSLTCLVKGFYPSDIAVEWESN
 GPENNYKTTTPVLDSGGSFFLYSKLTVDKSRWQQGNVFCSSVMHEALHNHYTQKSLSLSPGK

HPLC data:



CERTIFICATE OF ANALYSIS



Result Table (Uncal - Pr00439_23_04_2020 13_55_24_0030101 - VWD : Detector 1)

	Reten. Time [min]	Area [mAU.s]	Height [mAU]	Area [%]	Height [%]	W05 [min]	Compound Name
1	6.055	53.387	2.049	1.7	2.2	0.43	
2	6.883	3119.327	91.099	97.7	97.3	0.52	
3	8.183	19.135	0.482	0.6	0.5	0.23	
	Total	3191.849	93.629	100.0	100.0		

Important note - This product is for research use only. It is not intended for use in therapeutic or diagnostic procedures for humans or animals

Cat No: Pr00439

Recombinant Human ACE2-IgG Fc (LALA)-Fusion Protein

Important note - This product is for research use only. It is not intended for use in therapeutic or diagnostic procedures for humans or animals