

|   |
|---|
| Cat No: Pr00565    Multi-Tag Control Protein 2 [MTP2] |
|---|

## Product Summary

**Description:** Multi-Tag control protein is a genetically engineered synthetic fusion protein consisting of 12 commonly used epitope-tags fused together using flexible linkers. The multi-Tag synthetic protein can be used as a positive control in western and dot blots

**Host:** HEK293

**Alternative Name(s):** Multi-tag protein; Multiple-Epitope Tag protein; Multi Tag full length protein

**Published Application(s):** ELISA

**Format:** Purified (aq)

## Product Form

**Purification:** IMAC

**Supplied in:** PBS

**Storage Recommendation:** Store at 4°C for up to 3 months. For longer term storage aliquot into small volumes and store at -20°C

**Lot number:** on vial

**Concentration:** 1 mg/ml

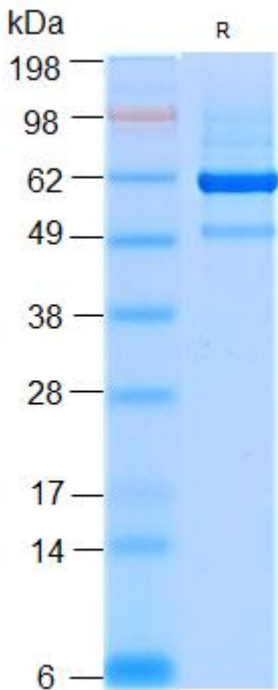
**Unit Amount:** 200 µg

**Purity:** >98%, as determined by SDS-PAGE and visualized by Coomassie Brilliant Blue



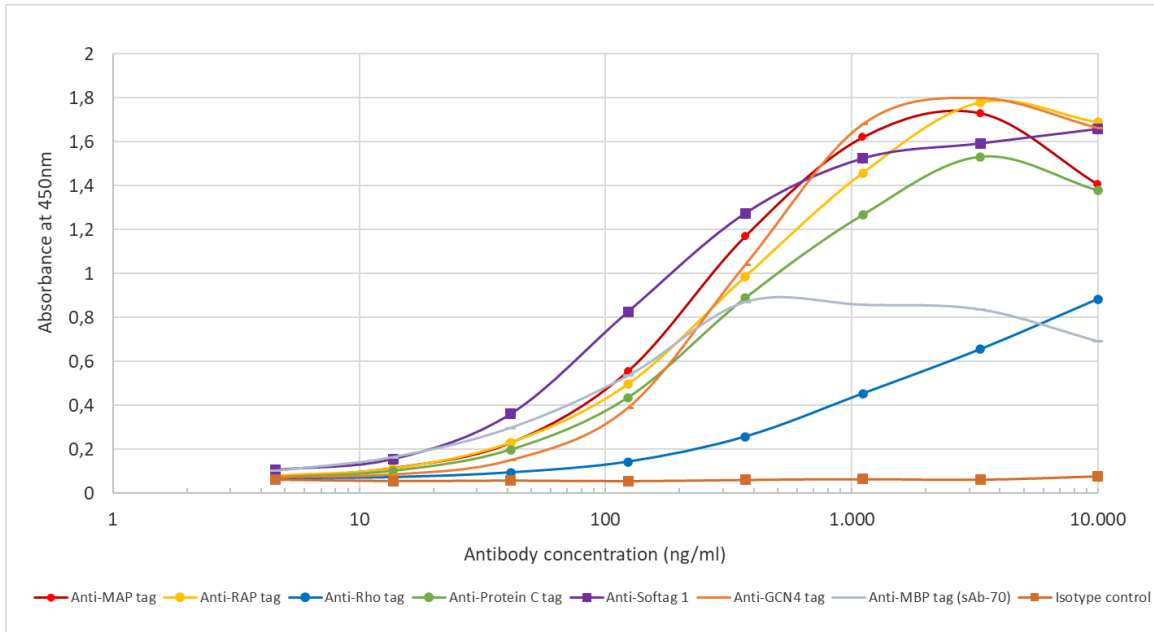
| Tag                | Sequence   |
|--------------------|--|
|                    | MKIEEGKLVWINGDKGYNGLAEVGGKFEKDTGIKVTVEHPDK<br>LEEKFPQVAATGDGPDIIFWAHDRFGGYAQSGLLAEITPDKAF<br>QDKLYPFTWDAVRYNGKLIAYPIAVEALSLIYNKDLLPNPPKT<br>WEEIPALDKELKAKGKSALMFNLQEPYFTWPLIADGGYAFKY<br>ENGKYDIKDVGVNAGAKAGLTFLVDLIKHKHMNADTDYSIAE<br>AAFNKGETAMTINGPWAWSNIDTSKVNYGVTVLPTFKGQPSK<br>PFVGVLSAGINAASPNKELAKEFLENYLLTDEGLEAVNKDKPL<br>GAVALKSYYEELAKDPRIATMENAQKGEIMPNIQMSAFWYA<br>VRTAVINAASGRQTVDEALKDAQTNSSSNNNNNNNNNNLGIE<br>GR |
| <b>MBP</b>         |  |
| <b>GCN4</b>        | HLENEVARLKK  |
| <b>MAP-tag</b>     | GDGMVPPGIEDKIT   |
| <b>ProteinCtag</b> | EDQVDPRLIDGK   |
| <b>Rap-tag</b>     | GDDMVNPGLEDRIEC  |
| <b>Rho-tag</b>     | TETSQVAPA  |
| <b>Alpha-tag</b>   | SRLEEEELRRRLTE   |
| <b>Rim-tag</b>     | PLHPRTAGASR  |
| <b>Softag</b>      | SLAELLNAGLGGS  |
| <b>Streptag</b>    | WSHPQFEK   |
| <b>Histag</b>      | HHHHHH   |
| <b>Peptag</b>      | AVERYLKDQQLGIW   |

**SDS-Page image:**



SDS PAGE Analysis: Lane 1: Molecular Mass Markers. Lane 2: 2.5µg Pr00565 resolved by SDS-PAGE under reducing (R) conditions (Coomassie stained).

## ELISA of anti-epitope tag antibodies on multi-tag protein:



ELISA plate was coated with the multi-tag protein Pr00565 at 5 ug/ml. Antibodies against common tags were titrated on a 3-fold serial dilution starting at 10000 ng/mL. Secondary anti-mouse IgGs were used at 1:4000.

**Important note - This product is for research use only. It is not intended for use in therapeutic or diagnostic procedures for humans or animals**