



## Recombinant Mouse CTLA4 Fc-Fusion Protein

Cat No: Pr00155-1.9

### Product Summary

**Description:** Recombinant mouse CTLA4 Fc-Fusion Protein manufactured using [AbAb's Recombinant Platform](#)

**Protein:** Mouse CTLA4

**Fc domain:** Mouse IgG1

**Structure / Form:** Disulfide-linked homodimer

**Species:** Mouse

**Construct Design Note(s):** The extracellular domain of CTLA4 has been fused to the Fc domain of mouse IgG1.

**Host:** HEK293

**UniProt Accession Number:** P09793

**Alternative Description:** Cytotoxic T-lymphocyte protein 4; CTLA4; CD152; CTLA-4-Ig; CTLA-4-Fc chimera; CTLA-4 (Fc tag); CTLA4-Ig; CTLA4-Fc chimera; CTLA4 (Fc tag)

**Published Application(s):**

**Tested Applications(s):** ELISA

**Activity:** Inhibitory receptor acting as a major negative regulator of T-cell responses. The affinity of CTLA4 for its natural B7 family ligands, CD80 and CD86, is considerably stronger than the affinity of their cognate stimulatory coreceptor CD28 [Uniprot].

### Product Form

**Purification:** IMAC purified

**Supplied in:** 0.1 mg size: PBS with preservative (0.02% Proclin 300), 1 mg size: PBS only.

**Endotoxin:** <1.0 EU/mg

**Shipping:** The product is shipped on blue ice. Upon receipt, store it immediately at the temperature recommended.

**Storage Recommendation:** Store at 4°C for up to 1 month. For longer term storage aliquot in small volumes and store at -20°C. Avoid repeated freeze-thaw cycles.

**SDS PAGE Purity:** >95%, as determined by SDS-PAGE and visualized by Coomassie Brilliant Blue.

**Important note - This product is for research use only. It is not intended for use in therapeutic or diagnostic procedures for humans or animals**

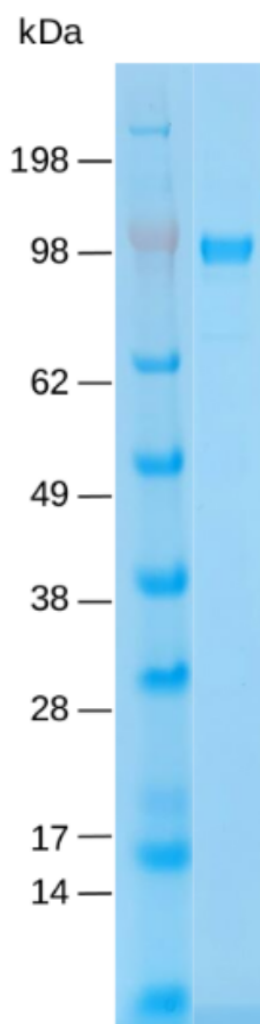
**Fc-Fusion Sequence (monomer)**

SEAIQVTQPSVVLASSHGVA SFPCEYSPSHNTDEV RVTVLRQTNDQMTEVCATTFTEKNTVGFLDYPFCSGTFNESRV  
NLTIQGLRAVD TGLYLCKVELMYPPPYFVGMGNGTQIYVIDPEPCPDSGGGGSVPRDQGCKPCICTVPEVSSVFIFPPKP  
KDVL TITLTPKVTCVVVDISKDDPEVQFSWFVDDVEVHTAQT KPREEQINSTFRSVSELPIMHQDWLNGKEFKCRVNSA  
AFPAPIEKTISKTKGRPKAPQVYTIPPPKEQMAKDKVSLTCMITNFFPEDITVEWQWNGQPAENYKNTQPIMDTDGSYF  
VYSKLVNQSKSNWEAGNTFTCSVLHEGLHNHHTKSLSHSPGKHHHHHH

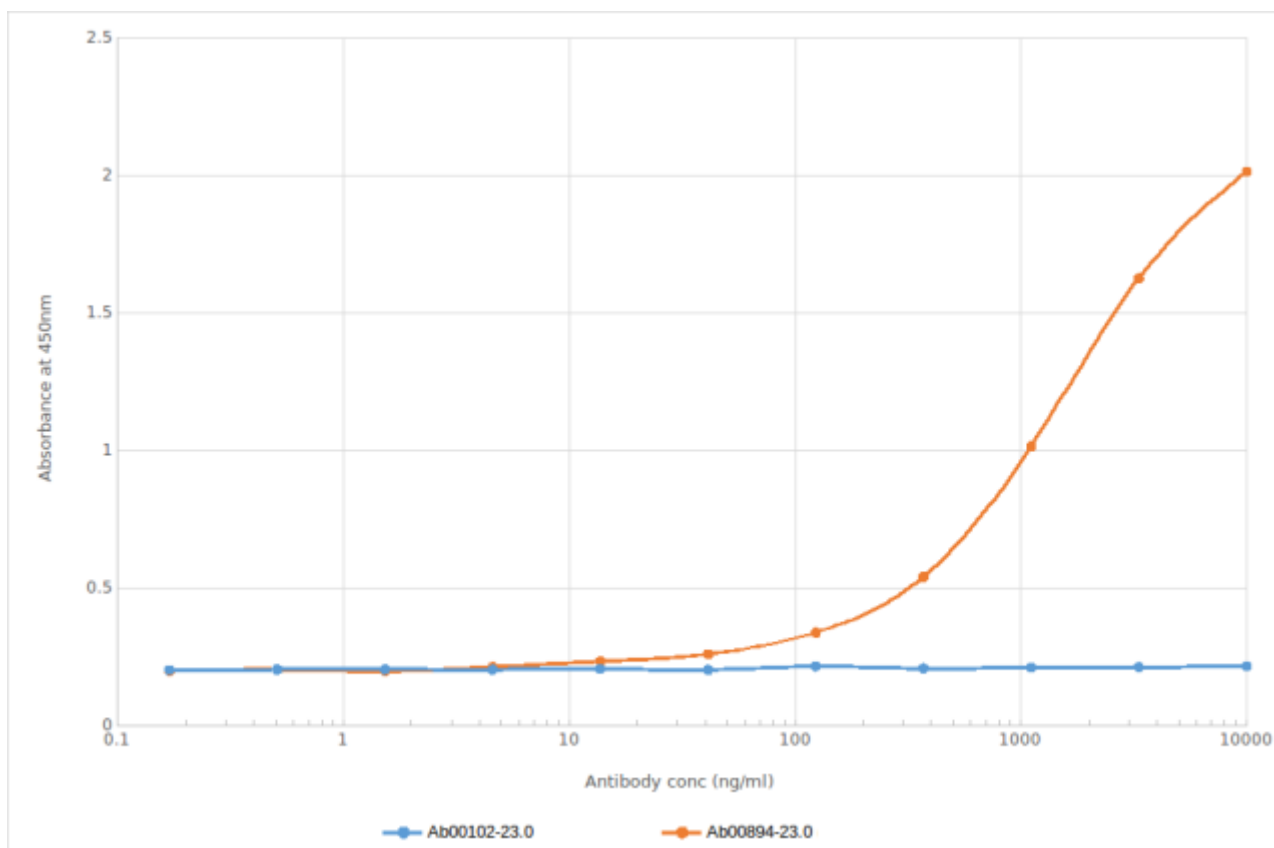
Underlined amino acids sequence include a G4S linker and 6xHis epitope tag, respectively.

**Calculated Molecular weight (dimer):** 81098 Da

**Extinction coefficient:** 86750 (calculation performed as described by Pace *et al.* (1995), PMID: 8563639).



**CTLA4 (Pr00155-1.9) SDS-PAGE.** Pr00155-1.9 under non-reducing conditions resolved by SDS-PAGE and stained using Coomassie-Blue.



**ELISA of anti-CTLA-4 antibody on mouse CTLA-4-Fc fusion protein.** Binding curves of the rabbit chimeric version of the anti-CTLA-4 antibody 9H10 (Ab00894-23.0; red line) and isotype control (anti-Fluorescein antibody Ab00102-23.0 4-4-20 (enhanced); blue line) to an ELISA plate coated with mouse CTLA-4-Fc fusion protein (Pr00155-1.9) at a concentration of 5  $\mu\text{g}/\text{ml}$ . A 3-fold serial dilution from 10,000 to 0.17 ng/ml was performed using Ab00894-23.0. For signal detection, a 1:4000 dilution of HRP-labelled anti-rabbit IgG1 antibody was used.

**Important note - This product is for research use only. It is not intended for use in therapeutic or diagnostic procedures for humans or animals**