



Product Datasheet

Sales Enquires: sales@absoluteantibody.com
Support Queries: support@absoluteantibody.com
Tel: +44 (0) 1865 920810
Fax: +44 (0) 1865 920811
absoluteantibody.com

Recombinant Mouse BTLA Fc-Fusion Protein

Cat No: Pr00224-1.9

Product Summary

Description: Recombinant mouse BTLA Fc-Fusion Protein manufactured using [AbAb's Recombinant Platform](#)

Protein: Mouse BTLA

Fc domain: Mouse IgG1

Structure / Form: Disulfide-linked homodimer

Species: Mouse

Construct Design Note(s): The extracellular domain of BTLA has been fused to the Fc domain of mouse IgG1.

Host: HEK293

UniProt Accession Number: Q7TSA3

Alternative Description: B- and T-lymphocyte attenuator; B- and T-lymphocyte-associated protein; CD272; BTLA-Ig; BTLA-Fc chimera; BTLA (Fc tag)

Published Application(s):

Tested Applications(s): ELISA

Activity: Lymphocyte inhibitory receptor which inhibits lymphocytes during immune response [Uniprot].

Product Form

Purification: IMAC purified

Supplied in: 0.1 mg size: PBS with preservative (0.02% Proclin 300), 1 mg size: PBS only.

Endotoxin: <1.0 EU/mg

Shipping: The product is shipped on blue ice. Upon receipt, store it immediately at the temperature recommended.

Storage Recommendation: Store at 4°C for up to 1 month. For longer term storage aliquot in small volumes and store at -20°C. Avoid repeated freeze-thaw cycles.

SDS PAGE Purity: >95%, as determined by SDS-PAGE and visualized by Coomassie Brilliant Blue.

Important note - This product is for research use only. It is not intended for use in therapeutic or diagnostic procedures for humans or animals

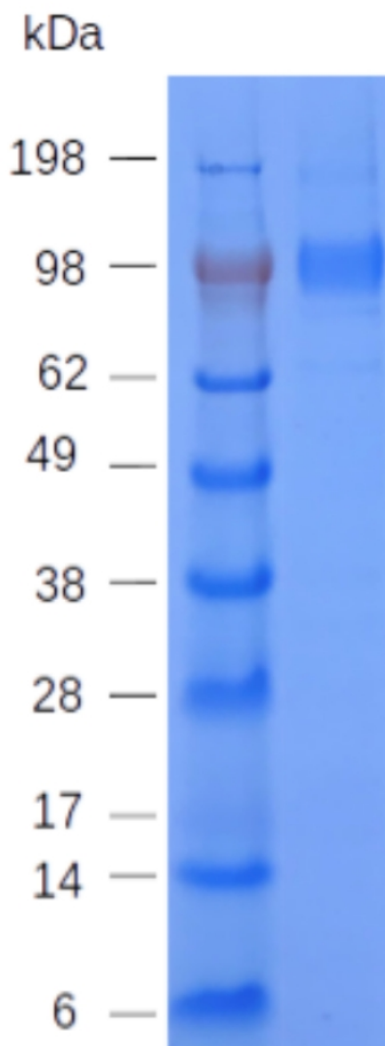
Cat No: Pr00224-1.9 Recombinant Mouse BTLA Fc-Fusion Protein
Fc-Fusion Sequence (monomer)

KATKRNDEECPVQLTITRNSKQSARTGELFKIQCPVKYCVHRPNVTWCKHNGTICVPLEVSPQLYTSWEENQSVPVFV
LHFKPIHLSDNNGSYSCSTNFNSQVINSHSVTIHVRERTQNSSEHPLITVSDIPDATNASGPSTMEERPGRWLLYGGGG
SVPRDQGCKPCICTVPEVSSVFIFPPKPKDVLITLTPKVTWVVDISKDDPEVQFSWFVDDVEVHTAQTTPREEQINST
FRSVSELPIMHQDWLNGKEFKCRVNSAAFPAPIEKTISKTKGRPKAPQVYTIPPPKEQMAKDKVSLTCMITNFFPEDITV
EWQWNGQPAENYKNTQPIMDTDGSYFVYSKLVNQKSNWEAGNTFTCSVLHEGLHNNHHTKSLSHSPGKHHHHHH

Underlined amino acids sequence include a G4S linker and 6xHis epitope tag, respectively.

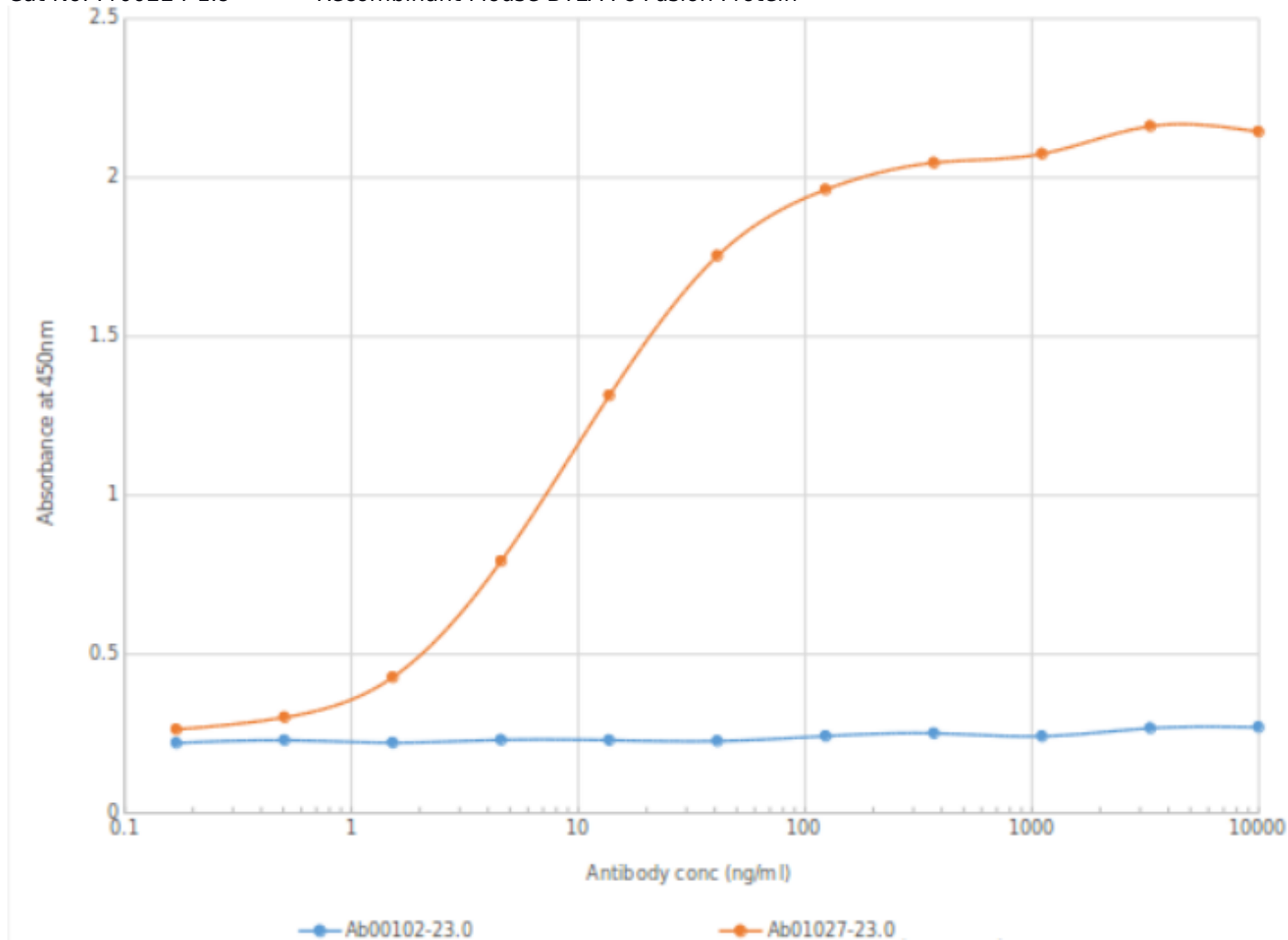
Calculated Molecular weight (dimer): 88076 Da

Extinction coefficient: 113940 (calculation performed as described by Pace *et al.* (1995), PMID: 8563639).



BTLA (Pr00224-1.9) SDS-PAGE. Pr00224-1.9 under non-reducing conditions resolved by SDS-PAGE and stained using Coomassie-Blue.

Important note - This product is for research use only. It is not intended for use in therapeutic or diagnostic procedures for humans or animals



ELISA of anti-BTLA antibody on BTLA-Fc fusion protein. Binding curves of the rabbit IgG chimeric version of the anti-BTLA antibody HMBT-6B2 (Ab001027-23.0; red line) and isotype control (Ab00102-23.0, anti-Fluorescein; blue line) to an ELISA plate coated with BTLA-Fc fusion protein (Pr00224-1.9) at a concentration of 5 μ g/ml. A 3-fold serial dilution from 10,000 to 0.17 ng/ml of Ab01027-23.0 was used. For signal detection, a 1:4000 dilution of anti-rabbit IgG1 (BioRad 5196-2504) antibody was used. The second increase in absorbance at 3333ng/ml is suggestive of a possible secondary binding epitope for Ab01027-23.0 on Pr00224-1.9.

Important note - This product is for research use only. It is not intended for use in therapeutic or diagnostic procedures for humans or animals